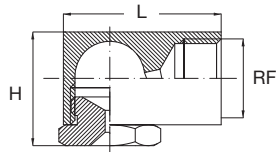


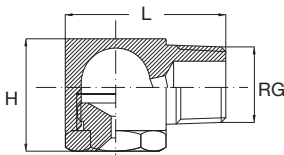
PE/PF



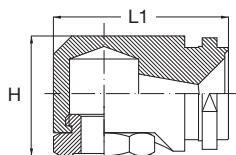
PE



PF



PT



STANDARD ANGLE SPRAY NOZZLES

The principle design is similar to the PA models but can be offered in much smaller flow rates.

This range is produced from bar stock materials and apart from the standard materials shown, they can be manufactured in any special material or alloy that are available in bar stock form.

- Materials
- B1 AISI 303 Stainless steel
 - B31 AISI 316L Stainless steel
 - T1 Brass

Standard spray angle

50°	RF RG inch	PEN	PFN	PTN	Code	DE mm	DU mm	Capacity at different pressure values							lpm bar	Dimensions mm		
								0.5	0.7	1.0	2.0	3.0	5.0	7.0		10	H	L
50°	3/8		•	•	2180	8.0	6.1	7.35	8.69	10.4	14.7	18.0	23.2	27.5	32.9	24	34	35
					2220	7.7	7.0	8.98	10.6	12.7	18.0	22.0	28.4	33.6	40.2			
					2390	9.5	9.0	15.9	18.8	22.5	31.8	39.0	50.3	59.6	71.2			

70°	RF	PES	PFS	PTS	Code	DE	DU	Capacity at different pressure values							lpm bar	Dimensions mm			
								0.5	0.7	1.0	2.0	3.0	5.0	7.0		10	H	L	L1
70°	1/8		•		0390	0.9	1.0	0.16	0.19	0.23	0.32	0.39	0.50	0.60	0.71	19	24	26	
					0780	1.4	1.7	0.32	0.38	0.45	0.64	0.78	1.01	1.19	1.42				
					1160	2.2	2.1	0.65	0.77	0.92	1.31	1.60	2.07	2.44	2.92				
					1230	2.5	2.7	0.94	1.11	1.33	1.88	2.30	2.97	3.51	4.20				
					1390	3.4	3.1	1.59	1.88	2.25	3.18	3.90	5.03	5.96	7.12				
					1630	4.0	3.9	2.57	3.04	3.64	5.14	6.30	8.13	9.62	11.5				
	1/4		•	•	•	0781	1.1	1.6	0.32	0.38	0.45	0.64	0.78	1.01	1.19	1.42	23	32	32
						1161	2.1	2.5	0.65	0.77	0.92	1.31	1.60	2.07	2.44	2.92			
						1231	2.6	2.8	0.94	1.11	1.33	1.88	2.30	2.97	3.51	4.20			
						1391	3.5	3.4	1.59	1.88	2.25	3.18	3.90	5.03	5.96	7.12			
						1631	4.6	4.3	2.57	3.04	3.64	5.14	6.30	8.13	9.62	11.5			
						1781	4.4	4.8	3.18	3.77	4.50	6.37	7.80	10.1	11.9	14.2			
	3/8		•	•	•	1392	3.7	3.5	1.59	1.88	2.25	3.18	3.90	5.03	5.96	7.12	24	34	35
						1632	4.5	4.2	2.57	3.04	3.64	5.14	6.30	8.13	9.62	11.5			
						1782	5.0	4.5	3.18	3.77	4.50	6.37	7.80	10.1	11.9	14.2			
						2118	5.8	5.6	4.78	5.65	6.75	9.55	11.7	15.1	17.9	21.4			
						2157	6.7	6.2	6.41	7.58	9.06	12.8	15.7	20.3	24.0	28.7			
						2196	7.5	6.7	8.00	9.47	11.3	16.0	19.6	25.3	29.9	35.8			
1/2		•	•	•	2197	9.5	6.4	8.00	9.47	11.3	16.0	19.6	25.3	29.9	35.8	31	50	50	
					2231	9.5	7.5	9.39	11.1	13.3	18.8	23.0	29.7	35.1	42.0				
					2310	9.5	9.0	12.7	15.0	17.9	25.3	31.0	40.0	47.4	56.6				
					2391	9.5	10.5	15.9	18.8	22.5	31.8	39.0	50.3	59.6	71.2				
					2470	10.0	12.0	19.2	22.7	27.1	38.4	47.0	60.7	71.8	85.8				
					2940	13.5	16.5	38.4	45.4	54.3	76.8	94.0	121	144	172				
3/4		•	•	•	2311	9.5	9.0	12.7	15.0	17.9	25.3	31.0	40.0	47.4	56.6	39	55	58	
					2392	10.7	9.7	15.9	18.8	22.5	31.8	39.0	50.3	59.6	71.2				
					2471	11.7	10.8	19.2	22.7	27.1	38.4	47.0	60.7	71.8	85.8				
					2550	11.7	12.0	22.5	26.6	31.8	44.9	55.0	71.0	84.0	100				
					2630	12.2	12.0	25.7	30.4	36.4	51.4	63.0	81.3	96.2	115				
					2700	12.7	12.0	28.6	33.8	40.4	57.2	70.0	90.4	107	128				
					2780	12.7	14.0	31.8	37.7	45.0	63.7	78.0	101	119	142				
					2860	12.7	16.1	35.1	41.5	49.7	70.2	86.0	111	131	157				
					2940	13.5	16.5	38.4	45.4	54.3	76.8	94.0	121	144	172				

WIDE ANGLE SPRAY NOZZLES

Wide spray angle

120°	RF RG inch	PEW	PFW	PTW	Code	DE mm	DU mm	Capacity at different pressure values							lpm bar	Dimensions mm										
								0.5	0.7	1.0	2.0	3.0	5.0	7.0		10	H	L	L1							
120°	1/8	●	●	●	0390	09	1.1	0.16	0.19	0.23	0.32	0.39	0.50	0.60	0.71	19	24	26								
					0780	1.4	1.5	0.32	0.38	0.45	0.64	0.78	1.01	1.19	1.42											
					1200	1.5	3.9	0.82	0.97	1.15	1.63	2.00	2.58	3.06	3.65											
					1230	2.0	3.4	0.94	1.11	1.33	1.88	2.30	2.97	3.51	4.20											
					1270	2.2	3.8	1.10	1.30	1.56	2.20	2.70	3.49	4.12	4.93											
					1320	2.1	4.5	1.31	1.55	1.85	2.61	3.20	4.13	4.89	5.84											
					1390	3.6	3.1	1.59	1.88	2.25	3.18	3.90	5.03	5.96	7.12											
					1510	3.4	5.0	2.08	2.46	2.94	4.16	5.10	6.58	7.79	9.31											
					1700	4.5	5.2	2.86	3.38	4.04	5.72	7.00	9.04	10.7	12.8											
					120°	1/4	●	●	●	0781	1.4	1.5	0.32	0.38	0.45				0.64	0.78	1.01	1.19	1.42	23	32	32
										1130	1.4	3.6	0.53	0.63	0.75				1.06	1.30	1.68	1.99	2.37			
										1160	1.4	4.0	0.65	0.77	0.92				1.31	1.60	2.07	2.44	2.92			
1190	2.0	2.3	0.78	0.92						1.10	1.55	1.90	2.48	2.90	3.50											
1271	2.2	3.8	1.10	1.30						1.56	2.20	2.70	3.49	4.12	4.93											
1321	2.2	4.5	1.31	1.55						1.85	2.61	3.20	4.13	4.89	5.84											
1391	3.6	3.1	1.59	1.88						2.25	3.18	3.90	5.03	5.96	7.12											
1511	3.4	5.0	2.08	2.46						2.94	4.16	5.10	6.58	7.79	9.31											
1600	3.4	5.2	2.45	2.90						3.46	4.90	6.00	7.75	9.17	11.0											
1701	4.2	5.2	2.86	3.38						4.04	5.72	7.00	9.04	10.7	12.8											
1781	3.7	6.0	3.18	3.77						4.50	6.37	7.80	10.1	11.9	14.2											
1860	4.0	5.6	3.51	4.15						4.97	7.02	8.60	11.1	13.1	15.7											
1940	5.0	5.7	3.84	4.54	5.43	7.68	9.40	12.1	14.4	17.2																
2117	5.8	2.4	4.78	5.65	6.75	9.55	11.7	15.1	17.9	21.4																
120°	3/8	●	●	●	1512	3.5	5.0	2.08	2.46	2.94	4.16	5.10	6.58	7.79	9.31	24	34	35								
					1601	3.5	5.2	2.45	2.90	3.46	4.90	6.00	7.75	9.17	11.0											
					1702	4.2	5.2	2.86	3.38	4.04	5.72	7.00	9.04	10.7	12.8											
					1782	3.7	6.0	3.18	3.77	4.50	6.37	7.80	10.1	11.9	14.2											
					1861	4.0	5.6	3.51	4.15	4.97	7.02	8.60	11.1	13.1	15.7											
					1941	5.0	5.7	3.84	4.54	5.43	7.68	9.40	12.1	14.4	17.2											
					2102	4.5	6.9	4.16	4.93	5.89	8.33	10.2	13.2	15.6	19.0											
					2110	5.0	6.2	4.49	5.31	6.35	8.98	11.0	14.2	16.8	20.0											
					2118	5.0	6.7	4.78	5.65	6.75	9.55	11.7	15.1	17.9	21.4											
					2133	6.1	8.0	5.43	6.42	7.68	10.9	13.3	17.2	20.3	24.3											
					2157	5.0	9.0	6.41	7.58	9.06	12.8	15.7	20.3	24.0	28.7											
					2172	6.2	7.5	7.02	8.31	9.93	14.0	17.2	22.2	26.3	31.4											
2196	6.2	8.4	8.00	9.47	11.3	16.0	19.6	25.3	29.9	35.8																
2220	6.2	9.7	8.98	10.6	12.7	18.0	22.0	28.4	33.6	40.2																
120°	1/2	●	●	●	2391	9.0	10.5	15.9	18.8	22.5	31.8	39.0	50.3	59.6	71.2	31	50	50								
120°	3/4	●	●	●	2630	10.3	15.0	25.7	30.4	36.4	51.4	63.0	81.3	96.2	115	39	55	58								

Pipe clamp

Our Accessories Catalogue (CTG AC) shows several types of pipe clamps allowing for an easy assembly of hollow cone nozzles onto a pipe manifold.

